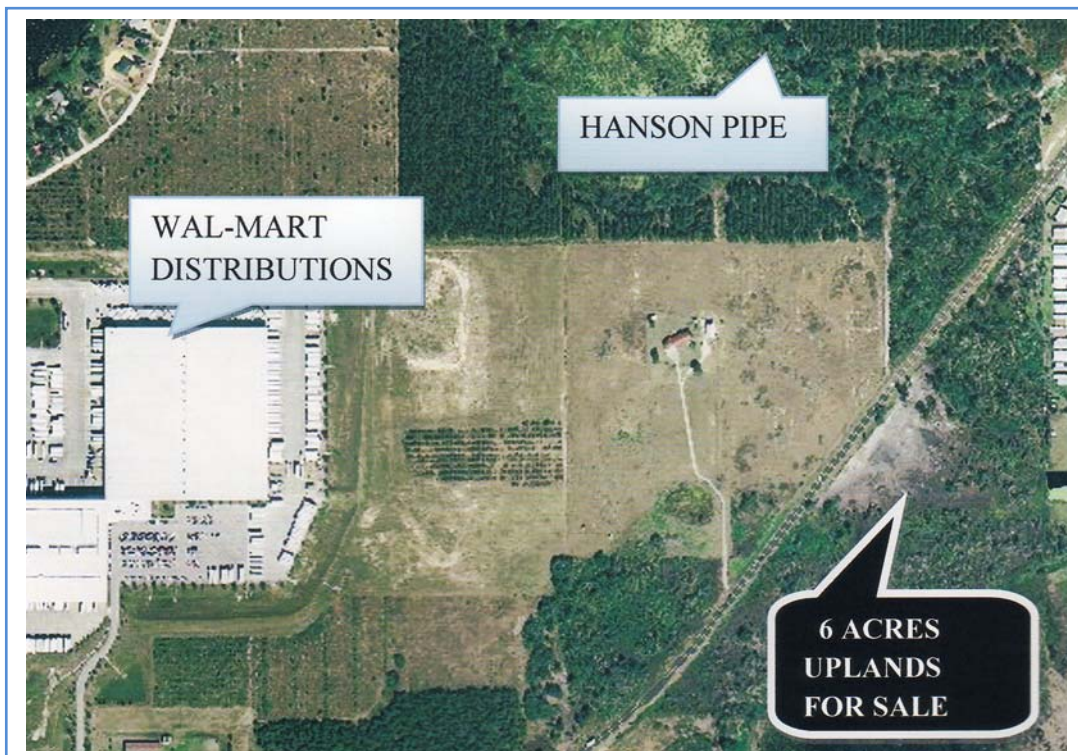


**FOR SALE APPROXIMATE 6 ACRES OF UPLANDS
IDEAL FOR AN INDUSTRIAL USE**

LOCATED	SR 544 EAST
IN CITY	WINTER HAVEN FL.
US 27	1 ¾ MILE EAST
INTERSTATE -4	11 MILES NORTH
CITY WATER	YES 12 INCH ON SITE
CITY SEWER	YES 12"
HIGHWAY FRONTAGE	OVER 2,000 FEET
TOTAL LAND	30
UPLANDS	6 A/C
UPLANDS FRONTAGE	600 FEET +
BEST SUITED FOR	INDUSTRIAL
ALLOWABLE TIME FOR RE-ZONING	YES

SHERWIN WILLIAMS & WAL-MART DISTRIBUTION NEARBY
PRICE \$ 555,000
CONTACT: **BILL C. WATSON REALTOR**



THIS INFORMATION, ALTHOUGH BELIEVED TO BE CORRECT IS NOT WARRANTED TO BE SO BY THE OFFICE OF WATSON & WATSON INC., REALTORS. OFFERED SUBJECT TO PRIOR SALE, CANCELLATION, PRICE CHANGE AND GOVERNMENTAL & ENVIRONMENTAL REGULATION (S). ALL MEASUREMENTS ARE APPROXIMATE. ANY INFORMATION CRITICAL TO YOUR BUYING DECISION SHOULD BE VERIFIED.